

# Affordability redefined

2 BHK apartments with superior specifications at unbelievable prices

Assured Rentals  
that pay 50%  
of your EMI





## Only the best, pricewise and otherwise.

Aayush is redefining what affordable homes mean. Homes at Aayush are thoughtfully designed with superior specifications, spacious layouts, balcony for all bedrooms, superior ventilation, large central green area and other facilities. Also, it is located in MARG Swarnabhoomi, a 1000 acre eco-system of Education, Research, Innovation, Industry and Living.

- Larger green space and greater ventilation
- Assured rentals that pay 50% of your EMI
- Part of a large township with 1000 acres of Commercial, Educational and Residential projects
- Social infrastructure - CBSE affiliated school, Departmental store, Medical service and ATM
- Excellent amenities like Children's play area, Clubhouse, Gym and Swimming pool
- Power backup for lift and common area

## Project Details

Plot Area - 3.3 acres

No. of Blocks - 4

### Block B & E

No. of Floors - G + 9 floors

No. of Units - 120 per block

### Block C & D

No. of Floors - G + 13 floors

No. of Units - 168 per block

Total no. of Units - 576

Unit Saleable Areas - 660 sq.ft., 669 sq.ft., 673 sq.ft., 762 sq.ft.

## Other Basic Facilities

Lift - 2 Nos. Passenger Lift for Each Block

Fire Fighting - Wet Riser and Fire Hose Reel

Water Supply - Overhead Domestic Tank and Fire Water Tank

DG Backup - For Common Area Lighting

Elevation images represented here are artistic impressions. Actual building view may vary.



\*conditions apply



# Typical Floor Plan Blocks B-E



FLAT NO: G01-901  
673 SQFT  
2BHK + 1T



FLAT NO: G02-902  
660 SQFT  
2BHK + 1T



FLAT NO: G03-903  
660 SQFT  
2BHK + 1T



FLAT NO: G04-904  
769 SQFT  
2BHK + 2T



FLAT NO: G05-905  
669 SQFT  
2BHK + 1T



FLAT NO: G06-906  
669 SQFT  
2BHK + 1T



# Typical Floor Plan Blocks B-E



FLAT NO: G6/ 90/  
673 SQFT  
2BHK + 1 T



FLAT NO: G08 908  
660 SQFT  
2BHK + 1 T



FLAT NO: C09 -909  
660 SQFT  
2BHK + 1 T



FLAT NO: G10 -910  
762 SQFT  
2BHK + 2 T



FLAT NO: G11-911  
669 SQFT  
2BHK + 1 T



FLAT NO: G12 912  
669 SQFT  
2BHK + 1 T







## TYPICAL FLOOR PLAN - BLOCK B & E





TYPICAL FLOOR PLAN - BLOCK C &amp; D

# Typical Floor Plan Blocks C-D



FLAT NO: G01-1301  
673 SQFT  
2BHK + 1 T



FLAT NO: G02-1302  
660 SQFT  
2BHK + 1 T



FLAT NO: G03-1303  
660 SQFT  
2BHK + 1 T



FLAT NO: G04-1304  
762 SQFT  
2BHK + 2 T



FLAT NO: G05-1305  
669 SQFT  
2BHK + 1 T



FLAT NO: G06-1306  
669 SQFT  
2BHK + 1 T





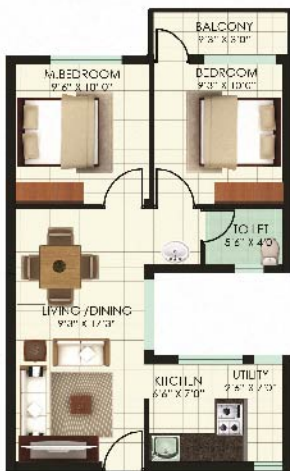
# Typical Floor Plan Blocks C-D



FLAT NO: G6/-1307  
673 SQFT  
2BHK + 1T



FLAT NO: G06-1308  
660 SQFT  
2BHK + 1T



FLAT NO: G09-1309  
660 SQFT  
2BHK + 1T



FLAT NO: G10-1310  
762 SQFT  
2BHK + 2T



FLAT NO: G11-1311  
669 SQFT  
2BHK + 1T



FLAT NO: G12-1312  
669 SQFT  
2BHK + 1T

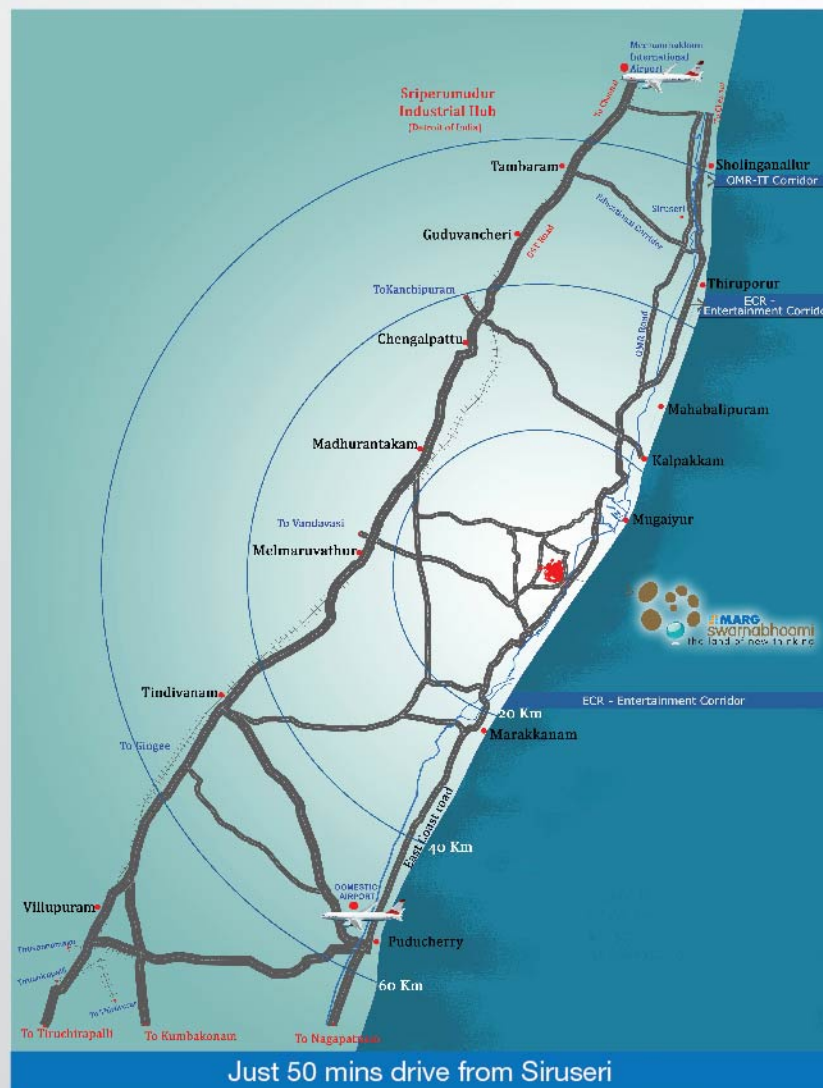




## Site Map



## Route Map





## Specifications

<b>1. Structure</b>		RCC Structure
<b>2. Flooring</b>	Living/Dining Bedrooms Kitchen Toilets Lobby/Corridor Area Staircase	Ceramic tiles (300 mm x 300 mm) Ceramic tiles (300 mm x 300 mm) Ceramic tiles (300 mm x 300 mm) Anti skid ceramic tiles (200 mm x 200 mm) Granolithic flooring Granolithic flooring
<b>3. Railing</b>	Staircase	MS railing
<b>4. Dadoing</b>	Toilets	Glazed ceramic tile up to 5' height in shower area & balance areas up to 3' height
	Above Kitchen Platform	Glazed ceramic tile 2' height above counter
<b>6. Painting</b>	Interiors Ceilings Exterior Handrails	Distemper Cement paint Cement paint Enamel paint
<b>7. Joinery</b>	Main Door Internal Doors Toilet Doors Windows Ventilators	Flush door with paint finish Flush door with paint finish PVC doors Aluminium sliding type with plain glass without grill Aluminium louvers with pinhead glass
<b>8. General</b>		2' wide Cuddappah kitchen counter
<b>9. Fittings</b>	Sanitary Fixtures  Kitchen Sink	White colour EWC with flush tank & washbasin with necessary CP fittings  Single bowl stainless steel sink without drain board
<b>10. Plumbing &amp; Electrical</b>	Water Supply Pipes Sewage Pipes Electrical Wiring Telephone & TV Point Electrical 15 A Socket	Concealed internal & exposed lines Concealed internal & exposed external lines Concealed wiring conduits Only in living Will be provided for wet grinder & refrigerator
<b>11. Amenities</b>	Lift Fire Fighting Water Supply  DG Backup Other Amenities	2 lifts per block Wet riser & fire hose reel Overhead domestic tank & fire water tank For common area lighting Children play area Shared clubhouse, gymnasium & swimming pool



What makes buying a house in  
**MARG Swarnabhoomi**  
A good investment?



- |                     |  |
|---------------------|--|
| ✓ GREAT LOCATION    | ✓ UNIQUE ECO-SYSTEM - BUILT FOR GROWTH |
| ✓ AFFORDABLE PRICE  | ✓ PRESENCE OF LEADING COMPANIES        |
| ✓ IMMEDIATE RETURNS | ✓ REPUTED DEVELOPER                    |

No wonder, over 1700 families have made a wise decision of investing in a house at MARG Swarnabhoomi.

  
**HAPPY  
INVESTING**



## A host of amenities await you



ATM



24/7 Internal Transport Service



Swimming Pool



Convention Centre



Departmental Store



Serene Environment



Health Clinic



CBSE Affiliated School - MARG Navajyothi Vidyalaya

Aayush is an integral part of MARG Swarnabhoomi, sharing all its state-of-the-art amenities. The amenities offered by MARG Swarnabhoomi have been designed to make life relaxing and joyful.